



The Rooster Tails Fishing Club of Northern California, Inc.

Educate ~ Entertain ~ Enhance

Volume 8, Issue 2 — February 2018

Rooster Tails Fishing Club of Northern California, Inc.
PO Box 7441
Auburn, CA 95604
530-887-0479
www.roostertailsfishingclub.com

Shawn Rainbarger Presents Spring Trout Fishing Seminar

- Third Generation & Fishing Prodigy
- Latest Tackle Rigging and Strategies
- 20% Discount for Veteran Clients & Supporter of Purple Heart Anglers

Attention

There will be new 2018 badges for you at the Feb 16 breakfast for those who have paid their dues. Don't remember if you paid??? Call or email Judy Miller at 530-823-1370 or judyot@sbcglobal.net

Third generation fisherman and a fishing prodigy, Shawn Rainbarger, owner of Shaun's Fishing Guide Service, will share his expertise for trout fishing at the Rooster Tails Fishing Club's February 16th breakfast meeting.

Shawn was blessed to have spent countless hours with his grand dad, Everett Holt, who was a fishing guide and instilled in him a life-long love of fishing. After 23 years in the steel industry and only in his early forties, Shawn took the major step of taking his success as a talented fisherman to become a full-time fishing guide.

After spending hundreds of hours on the water, Shawn's transition from angler to a professional fishing guide is a story in itself involving complying with strict state requirements including acquiring insurance, learning his clients onto fish. Shawn not only had CPR/First Aid, investing in quality tackle and the purchase of his fully rigged twenty-two-foot Boulton Sea Skiff. He spent thousands of dollars to equip his guide boat with comfortable seating, the latest electronics, multiple down-riggers, to make it ready to put

his clients onto fish. Shawn not only had to be good at catching fish, but also had to patiently teach his clients on how to catch fish. His personality provided to be his greatest asset to explain things in multiple ways and being excited for his clients catching fish.

Spring trout fishing on bodies of water like Camanche Lake, site of the Rooster Tails March Trout Tournament, will be no walk in

Continued on page 4



Shawn Rainbarger & his trout

Inside this issue:

Five Fishing Trips	2
Things You Don't Know About Rainbow Trout	3
Lake Camanche Trout Tournament - 3/21/18	3
2108 Jackpot & Grand Slam Tournaments	4

Calendar of Events

February 16
RT Breakfast
Shawn Rainbarger—speaker

March 16
RT Breakfast
Speaker—TBA

March 21
Members Only \$1,000
Spring Tournament on Lake Camanche

February 2018

Sun	Mon	Tue	Wed	Thu	Fri	Sat
				1	2	3
4	5	6	7	8	9	10
11	12	13	14	15	16	17
18	19	20	21	22	23	24
25	26	27	28			

Five Fishing Tips for Hauling Big Spring Rainbow Trout

As the cold winter rains are finally subsiding from our lakes and reservoirs, that's the time to hit the water for spring trout fishing. You don't always have to go really deep to find the fish this time of year. That's because the water is still a bit cool for rainbow trout, which prefer a comfort zone a little north of 50° F. As a result, you'll find them closer to the surface, where the sun's rays have slightly warmed up the water. All you have to do is locate big trout is to find their food sources, and you're in business. With that in mind, here are some five tips for putting big spring trout in your boat.

1. In the early spring, many species of small forage fish will head to creeks and small streams to spawn. That means you can often find hungry 'meat-eater' big trout lying in wait, right where the water inlet connects to the main lake. Slowly and quietly approach such hot spots using your electric trolling motor to avoid spooking these predator feeders. Along the first drop-off adjacent to the creek mouth, cast a small minnow imitation lure, like a Yo-Zuri Pin Minnow or small sinking-Rapala and allow it to settle down into the run-off entering the lake. It is better to cast into these prime areas versus trolling through them.

2. When trolling spring lake waters early in the morning, run down-riggers or lead-core line in the top 10' to 20' of water along drop-offs and adjacent to the shoreline versus mid-lake being careful not to get hung-up on structure. Run lake willow-leaf trolls back about 50'-75' behind the boat with a large 2"-3" grub on a single hook in natural colors like pumpkin seed or black/grey. Use a 8#-10# mono-leader 10"-12" between the last troll-leaf blade and the hook. An alternative to a grub, thread a large night crawler onto a Mastad Slow-Death hook which causes the night crawler to slowly spin. Another alternative is to use a 'lake legal' small real minnow with a red egg hook impaled in its snout. The idea is the trolls imitate a school of baitfish with the straggler (lure/bait) seen as an easy meal to a big trout. The spinning troll-blades reflect

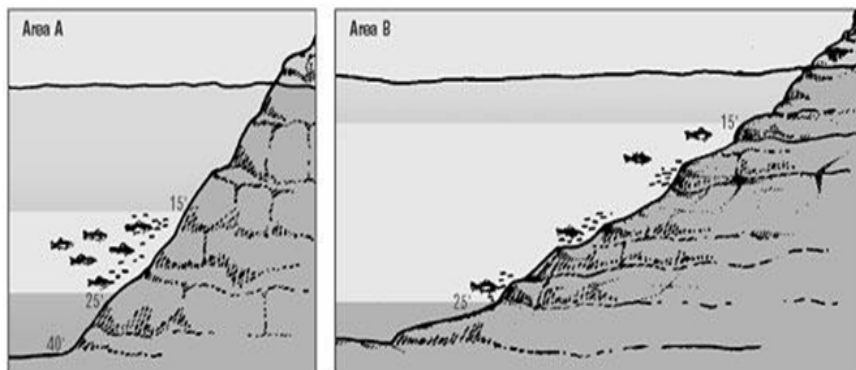
light like the silvery-sides of bait fish as well as creating their swimming vibrations. Keep in mind that when you troll at a speed of around 1.5 to 2.0 miles an hour with lead-core, your troll and bait will sink about 36" for every 10 yards of 12# lead-core line you let out (the line is color-coded in 10-yard increments). Set down-riggers just below the water surface by a couple of feet, with up to 75 feet, your lure presentation will be running about 10' to 20' depending on the terminal tackle weight variables.



3. Another likely holding area for feeding lunker trout will be on under water points and submerged humps that come up shallow. These areas rocky structures retain heat from the sun, warming up the immediate area and attracting forage and feeding trout. Use your fish finder sonar to locate the edge of the structures and trolling over and round them. If the feeding fish are holding below the forage fish, stop and drop small jigs or spoons in natural colors like rainbow or watermelon.

4. Most larger water reservoirs and lakes during spring time conditions will have a mostly uniform temperature except for the top 15'-25' of surface water that will be warmed by the sun, warm spring rains, surrounding run-off, and water enter from adjoining tributaries. Active feeding trout typically do not school and will be scattered over the warmer water making trolling the method of choice in spring. Warm water is only relative to the greater water column volume and weather conditions. Wind and currents will also impact the water temperature, a fish-finder with a temperature read-out will help locate the ideal trout prefer in the mid to upper fifties.

Location In Sloping Shorelines



Trout herding minnows near vertical structural Area A tend to be more concentrated than trout feeding over gradual-sloping shorelines like Area B.

5. Larger trout tend not to expend bursts of energy to chase a meal in large expanses of water, except when competing with other feeding fish. Open water trolling lends itself to two basic strategies of fast trolling to stimulate a reaction strike or slow trolling a presentation as an easy meal. If bait balls or surface feeding fish are present, fast trolling of spoons like Speedy Shiners or Needle Fish would be the lure of choice. Slow trolling Crystal Basin Wild or Seps Side-Kick with a trailing grub or night crawler would be the better presentation.

Things You Don't Know About Rainbow Trout (*Oncorhynchus Mykiss*)

The Rainbow Trout is part of the SALMONIDAE FAMILY; also called Steelhead and is native to the west coast of North America from southern Alaska to Durango, Mexico and inland as far as central Alberta in Canada and Idaho and Nevada in

the U.S. It has been extensively introduced across the lower Canadian provinces and throughout the area of the Great Lakes to the Atlantic coast, south in the Appalachians to northern Georgia and Alabama, east in the southern U.S. to western Texas and sporadically in the central U.S. as well as above the Great Lakes on the Atlantic coast. It has been transplanted to New Zealand, Australia, South America, Africa, Japan, southern Asia, Europe and Hawaii. An Asian species known as the Kamchatka trout is believed to be a form of the rainbow trout. It is native to the Amur River in the eastern part of Russia as well as Kamchatka and the Commander Islands.

Coloration varies greatly with size, habitat and spawning periods. For example, stream dwellers and spawners usually show the darkest and most vivid colors and markings, while the steelhead is silvery when it returns from the sea. Though noted for the broad red or pink stripe along the middle of its sides, this stripe may not be present on all forms, particularly the sea run steelhead and immature specimens in clear lakes. A similar stripe is sometimes present on the golden trout (*Oncorhynchus aguabonita*) and the cutthroat trout (*O. clarki*), though the golden trout usually has about 10 prominent parr marks on the sides through adulthood (uncommon but not unheard of in adult rainbows). The cutthroat can usually be distinguished by the yellow, orange, or red streak in the skin fold on each side under the lower jaw. In some waters rainbow trout may faintly display this streak in the skin fold, but most do not.

This is an extremely valuable species in any and all of its forms. It is the fly fisherman's delight as it takes a fly readily, leaps often, and fights hard. Though there is no direct commercial demand for the rainbow it is taken by Pacific salmon fishermen and it is pond reared in Europe and Japan to be sold as frozen whole fish. The flesh ranges from bright red in



small lake and stream populations to pink or white in large lake, stream, and steelhead populations in which the diet is primarily piscivorous. It is excellent regardless of color and may be cooked in any manner desired.

The International Game Fish Association is a not-for-profit organization committed to the conservation of game fish and the promotion of responsible, ethical angling practices through science, education, rule making and record keeping. All-Tackle World Record for Rainbow Trout as determined by the IGFA.:



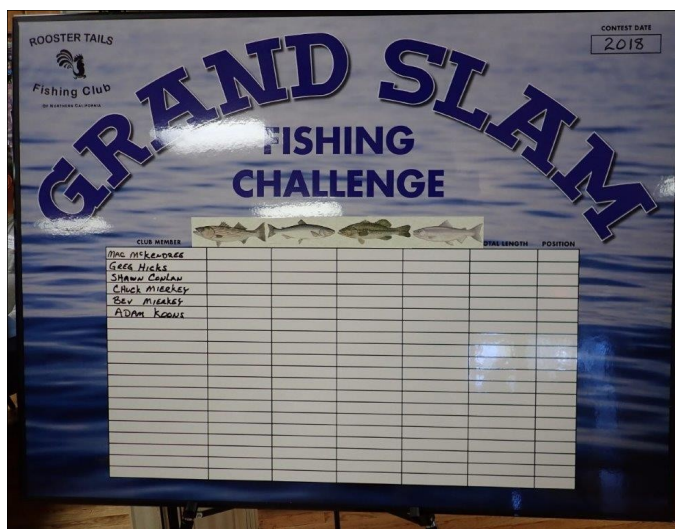
All-Tackle World Record for Rainbow Trout as determined by the IGFA: Line Class: All-Tackle; Weight: 48 lb.0 oz; Location: Lake Diefenbaker, Canada; Catch Date: Sept 5, 2009; Angler: Sean Konrad.

The Rooster Tails Camanche Lake Trout Tournament - Members Only - Wednesday, March 21, 2018

The **Rooster Tails March 21st Camanche Lake Trout Tournament Member's Cash Tournament** will be launching from the South Shore boat ramp at safe-light on **Wednesday, March 21, with a 2:00 p.m. weigh-in at the South Shore boat ramp parking lot.** Camanche Lake South Shore, (11700 Wade Lane, Valley Springs, CA 95252) gate opens at 5:00 a.m. with a tow vehicle/boat/parking fee of \$17.00, plus a \$6.25 per person fishing access permit. Shore fishermen are encouraged to fish the South Shore trout pond or from various lake-side access points around the lake. Shore angler's fee is

\$9.00 per person, plus \$6.25 fishing access permit. Each person must have in their possession a Camanche Fishing Permit plus a 2018 fishing license. Boat owners are encouraged to pick-up an invasive species boat inspection form at our breakfast meeting and complete it in advance of arriving at the lake to expedite access. Coordinate and find new fishing partners by accessing the Rooster Tail's web site **Members Only** tab. **Club members will compete as individual entrants for a share of the \$1,000 in tournament cash based on fifty (50+) anticipated participants.**

Grand Slam Fishing Challenge



The Grand Slam Fishing Challenge (GSFC) was created for club members with a higher degree of fishing skills, to focus on specific fish species, and to compete to win one large single cash prize. The 2017 winner was Greg Hicks, winning \$250. This contest is based on contestants catching and submitting the lengths of only four (4) pre-determined fish species. The 2018 designated four species are: King Salmon (ocean or river), Kokanee, Largemouth Bass, and Striped Bass.

During the contest time-frame, contestants submit successive entries of increased lengths over their prior catch in any of the four (4) predetermined fish species. The final combined total length of the four species by November 30th determines a **single winner of the GSFC**. However, the winning-length contestant must have caught at least one of all four species.

The standing of each contestant's on-going length tally will be displayed on a GSFC score board at each breakfast meeting and published in the club's monthly newsletter. The \$50 entry fee and sign-ups start at the January 19th breakfast meeting. Contest Chairman is Board Member Mel Ewing, 916-759-3665.

Shawn Rainburger – continued

the park. With reoccurring rain storms accompanied by strong winds, similar water impoundments like Camanche will be cold, probably very discolored with floating debris. It will not be easy to entice a trout into striking without some careful planning under these spring conditions. Novice as well as experienced trout anglers, especially those fishing spring fishing derbies and tournaments, are encouraged to attend Shawn's trout seminar. He will be covering the latest tackle rigging and strategies for locating feeding spring trout. In addition, the Rooster Tails will have on display the latest trout lures on display for breakfast attendees review.

Jackpot Contest

	2018	2017	LENGTH	WEIGHT	WATER	DATE	ANGLER
Kokanee			17 1/2"	2lbs. 7oz	WHISKEY TOWN	8-5	BEV MIERKEY
Landlocked Salmon			21"	36.4oz	DON PEDRO	4-28	SHAWN CONLAN
River or Ocean King Salmon			39"	22lb 6oz	SACRO RIVER	10-11	SHAWN CONLAN
Striped Bass			34 1/4"		FEATHER RIVER	4-25	TOM HYDE
Rainbow Trout			25 1/2"	8lb 4oz	BLAIR LAKE	5-14	GARY ROBERTS
Brown Trout			17 1/2"		NORTH FORK AR	5-15	SHAWN CONLAN
Steelhead			27 1/2"	9lb 7oz	AMERICAN RIVER	1-17	PETER ZITTERE
Lake Trout (Mackinaw)			23 1/2"		DONNER LAKE	6-23	SHAWN CONLAN
Large Mouth Bass			23"	6 lbs	LOP	7-2	RUSS WILLIAMS
Small Mouth Bass			16"		Folsom Lake	1-16	STEVE LENHEIM
Catfish			28 1/2"		CLEARLAKE	11-18	MEL EWING
Shad			19 1/4"		AMERICAN RIVER	6-23	GREG HICKS
Crappie			16 1/4"		CAMANACHE	3-9	JOHN HESS
Sturgeon			34"		SACRO DELTA	11-18	MEL TAKAHASHI

2017 entries in red—2018 entries in black

KOKANEE, **Bev Mierkey**, 17 1/2", 2 lbs 7 oz, Whiskeytown Lake, 8/5/17

LANDLOCKED SALMON, **Shawn Conlan**, 21", 36 lbs 4 oz, Don Pedro, 4/28/17

RIVER/OCEAN KING SALMON, **Shawn Conlan**, 39", 22 lbs.6 oz., Sacramento River, 10/11/17

STRIPED BASS, **Tom Hyde**, 34 1/4", Feather River, 4/25/17

RAINBOW TROUT, **Gary Roberts**, 25 1/2" Blair Lake, 5/14/17

STEELHEAD, **Peter Zittere**, 27 1/2", 9 lbs. 7 oz., American River, 1/17/18

LAKE TROUT (Mackinaw), **Shawn Conlan**, 20 1/2", Donner lake, 6/23/17

LARGE MOUTH BASS, **Russ Williams**, 23", 6 lbs., LOP, 2/14/17

SMALL MOUTH BASS, **Steve Lenheim**, 16", Folsom Lake, 1/16/18

SHAD, **Greg Hicks**, 19 1/4", American River, 6/23/17

CRAPPIE, **John Hess**, 16 1/4", Camanche Lake, 3/9/17

Shawn and his family live in Nevada City. To find out more about Shawn's Fishing Guide Service visit his web site at www.shauguideservice.net.

Shawn provides a 20% discount to veteran clients and is a supporter of the Purple Heart Anglers group which has helped nearly 2,000 wounded veterans heal by taking them fishing.

For more club and meeting information contact Jim at 530-887-0479