



The Rooster Tails Fishing Club of Northern California, Inc.

Educate ~ Entertain ~ Enhance

Volume 9, Issue 4 — April 2019

Rooster Tails Fishing Club of Northern California, Inc.
 PO Box 7441
 Auburn, CA 95604
 530-887-0479
www.roostertailsfishingclub.com

FOLSOM LAKE—WHERE DO YOU START?

- Folsom has 11,500 acres of water, 75 miles of shoreline, 15 miles up the North Fork, 11 miles up the South Fork
- Catch lake's hold-over trophy trout and big king salmon
- Hear techniques, tackle rigging and strategy for fishing Folsom
- See Jerry's custom Rogue Jet guide boat

As winter storms fade and Folsom Lake starts to warm with spring sunshine, the Rooster Tail Fishing Club will be preparing for their Annual Spring Members-Only fishing outing. Folsom Lake was chosen for this club event because of its unique characteristics to challenge both skilled as well as the novice angler. Spring fishing on Folsom's 11,500 acres of water, 75 miles of undulated shoreline, 15 miles up the lake's North Fork and about 11 miles up the lake's South Fork of the American River feeds this giant lake. For some anglers that don't fish Folsom regularly, it might seem overwhelming and they often start to fish by randomly trolling its depths that reach over three-hundred feet. What attracts most anglers to this magnificent water impoundment is the chance to land hold-over trophy trout and big hard fighting king salmon. Our club found the answer to 'Where do you Start' with booking Pro Fishing Guide, Jerry Lampkin, TNG Fishing Guide Service, (www.tngmotorsports.com), for a special seminar on techniques, tackle rigging, and strategy for fishing Folsom. His seminar will be held on **Friday, April 19th** at the Rooster Tails Fishing Club's monthly third Friday breakfast meeting held at the Auburn Elks Lodge, 195 Pine Street, Auburn, 95603. Doors to the Lodge open to all attendees at 7:00 a.m. with

free coffee and the opportunity to speak with Jerry one-on-one before enjoying a wide selection \$15 buffet breakfast that is served at 8:00 a.m. Reservations are not necessary, but Rooster Tail Members and non-member guests are encouraged arriving early for a good seat.



Folsom Bright Rainbow Trout



Jerry & a quality Folsom King Salmon

Inside this issue:

What You Need To Know About Folsom Lake	2
Folsom Lake, continued	3
Sharpen Your Fishing Knife Inexpensively	4
Jackpot Contest	4

Calendar of Events

April 19
 RT Breakfast
 Jerry Lampkin, TNG Motorsports

April 24
 Members Only
 Spring 'Fishing Outing' on Folsom lake

May 17
 RT Breakfast
 Speaker—TBA

Con't on page 4

April 2019						
Sun	Mon	Tue	Wed	Thu	Fri	Sat
	1	2	3	4	5	6
7	8	9	10	11	12	13
14	15	16	17	18	19	20
21	22	23	24	25	26	27
28	29	30				

WHAT YOU NEED TO KNOW ABOUT FOLSOM LAKE

Not far from the Folsom Prison made famous by Johnny Cash, is the great fishery Folsom Lake. The lake has a surface elevation of 466 feet with its 75 miles of shoreline intersecting El Dorado, Placer, and Sacramento County. It has nine boat launch locations make lake access easy for boat owners. Although the lake levels vary a lot, the lake recovers quickly and predictions are for high water levels extend into the future due to improvements to the dam.



Folsom Lake. 7806 Auburn-Folsom Road, Folsom, CA 95630

Rainbow trout plants at Folsom have varied greatly from year to year. The Department of Fish and Wildlife has stocked 7,600 pounds of rainbows in Folsom last 2018 season – and will stock more trout this spring 2019. The CDFW planted Folsom with 13,300 pounds of rainbows in 2015, 5568 pounds in 2016, and 3250 pounds in 2017. “Also, in 2014 we put in 41,760 sub-catchable Eagle Lake Trout (ELT) as ‘put and grow’ fish

The American River watershed has produced largest wild and holdover rainbows found in the state.

The American River below Nimbus Fish Hatchery produced a 25.04 lb. rainbow (legally considered a steelhead) in February 2002, while Lake Natoma above the dam produced a 27-1/2 lb. new inland state rainbow record in 2008. And Lake Natoma has produced many hundreds of rainbows in the 10 to 20 lb. class over the past two decades, including one 12.5 lb. rainbow that measured 24 inches long. **The trout in Lake Natoma feed on the same forage species found in Folsom Lake, pond smelt and threadfin shad, so it’s not unreasonable to believe that a fish in the 15 to 20 lb. class could also come out of Folsom.** Rainbow trout and Chinook salmon can be caught in Folsom year round, but early spring is the best time to target both species.

Bank anglers experience the top rainbow and king action in the fall during the period of the fall turnover October through December. Fishermen regularly hook a mixture of holdover trout and salmon while tossing out PowerBait, nightcrawlers, minnows and other baits under bobbers and on sliding sinker rigs. “There is also a fairly significant wild rainbow trout component in the fishery,” said Jay Rowan, CDFW Senior Environmental Scientist Supervisor. “The thought is that these fish use the North and South forks to rear, come down to the lake during certain times of year to feed and get out of the warm water in the forks, then head back up into the forks to spawn. “I’m not sure by percentage how much of the catch they make up, but enough show up in pictures on the net that make me think it’s a fairly decent part of the fishery. They certainly add a trophy component to the fishery,” said Rowan.

that have flourished. I think because of drought they didn’t work out so well, but we’re looking at giving the ELT sub-catchables another shot in the future now that we’ve got some water,” he noted.

Folsom Lake is the second reservoir in the state after Don Pedro where the successful spawning of Chinook salmon has been documented by anglers and CDFW biologists.

The CDFW stocks triploid (sterile) Chinook salmon in the lake when they are available. The Chinooks were first stocked in 1999 and have been a very popular species with anglers because they grow to over 8 pounds in the forage-rich waters of Folsom. The lake is also known for its naturally-reproducing population of landlocked king salmon in addition to fat rainbow trout, largemouth bass, spotted bass, smallmouth bass, channel catfish, bluegill and crappie.

Day Use & Boat Launch Fees: The day use fee is \$12 at Beals Point, Browns Ravine, Folsom Point, Granite Bay, the Peninsula and Rattlesnake Bar. **The boat launch fee is \$10 for a power boat.** Boat launching is available at Folsom Point, Browns Ravine, Granite Bay, and Rattlesnake Bar when the lake is full. For persons 62 years of age or older. Proof of age based on valid state-issued driver license or other suitable photo identification. Permits year-round \$1.00 discount for vehicle day use and a \$2.00 discount for family camping in most California State Park operated units regardless of income status without the need to purchase any pass. Folsom Lake Marina in the Browns Ravine Recreation Area is a full-service marina. For more information, contact: (916)933-1300, <http://www.folsomlakemarina.com>

WHAT YOU NEED TO KNOW ABOUT FOLSOM LAKE — *continued from page 2*

California Explorer Vehicle Day Use Annual Pass (Hangtag):

\$195, This pass is also honored at most parks throughout the state that are operated by California State Parks and charge a vehicle day use fee. The California Explorer Vehicle Day Use Annual Pass is valid for 12 months from the month purchased. For questions or more information, please contact the [Park Pass Sales Office](#) at (800) 777-0369 ext. 2 or (916) 653-8280 or via email at passinfo@parks.ca.gov. **Note: Lost or stolen passes cannot be replaced and no refunds can be issued.**

Boat Use Annual Pass (Hangtag or Sticker): \$100.00, Valid for one year from month of purchase. May be purchased online from the California State Parks Store. The "Boat Use" Annual Pass is a small sticker that is placed on the California Explorer or the Golden Poppy Vehicle Day Use Annual Pass hangtag or a separate card for those who already have their passes. Valid for a motorized vessel, sailboat over 8-feet or personal watercraft (PWC).

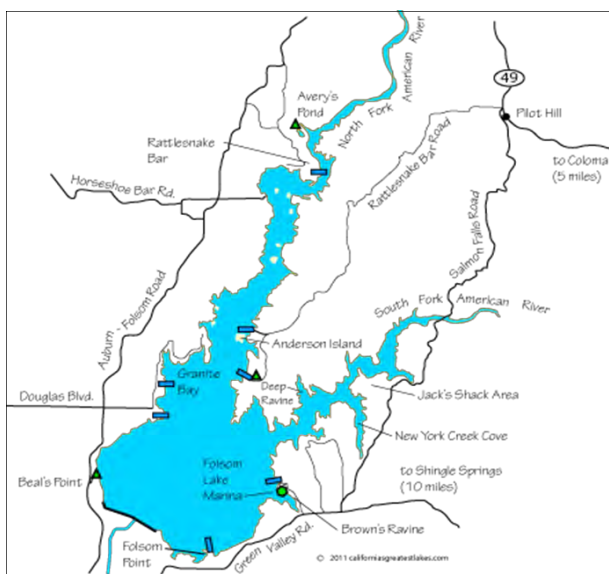
- Folsom Lake water level fluctuates throughout the year. Hazards and submerged obstacles may not always be marked or clearly visible.
- No person under 16 years of age shall operate a vessel.
- A person between the ages of 12 and 15 may operate a vessel, while accompanied by a person who is at least 18 years of age and who is attentive and supervising the operation of the vessel.
- State law requires all children under 13 years old to wear a U.S. Coast Guard-approved life jacket while on board a vessel that is 26ft or less while underway.
- All vessels must be currently registered and must carry a copy of current registration on-board the vessel at all times, along with a Coast Guard approved fireextinguisher.
- No vessel may be operated on the lake after park closing hours.

Folsom Lake Facts

More about Folsom Lake & Dam...

Folsom Lake was created in 1955 by Folsom Dam, a concrete dam flanked by earth wing dams and dikes with a total length of about 9 miles. The lake features some 11,500 surface acres of water when full, and has 75 miles of shoreline. The Lake level normally varies from 466 feet elevation in early summer to a low of 426 feet in early winter. State Parks' goal is to ensure that visitors to the lake have a safe and pleasurable experience. Following are some basic laws and rules with which you should become familiar prior to bringing your boat to the lake:

- While it isn't illegal to drink alcohol on a boat, it is against the law to operate a vessel while under the influence of intoxicating liquor or drugs. The blood alcohol limit for boating is the same as that for driving a car - 0.08%. A person convicted of Boating Under the Influence (BUI) may receive a fine of up to \$1,000 and six months in jail. More importantly, alcohol consumption by the vessel operator or passengers is a factor in approximately 25% of all fatal motorboat accidents in California and BUI has become the leading contributing factor in fatal recreational boating accidents. It is recommended that boaters avoid drinking alcoholic beverages which can impair a boater's judgment, balance, vision, and reaction time.
- Speed Limit is 5MPH or Idle Speed, within 200' of designated swim areas (Beals Point & Granite Bay swim beaches).
- Speed Limit is 5 MPH or Idle Speed, within 200 feet of shore.



- **Park Entrances:** The park has multiple entrances most of which are fairly easily accessed by either Interstate 80 to Douglas Blvd. (east), or Highway 50 to Hazel Ave., or Folsom Blvd., (north).
- **Size:** The lake has a surface area of nearly 11,500 acres when at capacity with 75 miles of shoreline. The reservoir holds 977,000 acre feet of water when full. Folsom's water level when full is 466 feet above sea level.
- **Season:** The lake offers year-round fishing for rainbow trout, king salmon, largemouth bass, spotted bass, smallmouth bass, channel catfish, bluegill and crappie. The lake is known for its naturally-reproducing population of landlocked king salmon.
- **Boating:** Folsom Lake boasts five separate launching facilities. Granite Bay has a large multiple lane ramp. Browns Ravine sports a four lane ramp and a two lane ramp. Folsom Point features a four lane ramp. Rattlesnake Bar has a seasonal two lane ramp. The Peninsula has a single lane ramp.

When the lake is drawn down as far as it is now, many of these launching facilities are out of the water, so call before you arrive to determine which ramp is in operation.

- **Folsom Lake Granite Bay Entry 6am-10pm:** For persons 62 years of age or older. Proof of age based on valid state-issued driver license or other suitable photo identification. Permits year-round \$1.00 discount for vehicle day use and a \$2.00 discount for family camping in most California State Park operated units regardless of income status without the need to purchase any pass.
- **Park Fees Day Use:** Granite Bay, Beals Point, Browns Ravine, Folsom Point - \$12.00.
- **Boat Launch Fee:** \$10.00

Sharpen Your Fishing Knife Inexpensively

Jackpot Fishing Contest

Fish knives are considered to be among the most difficult knives to sharpen. The fish knife is narrow and flexible making it difficult to hold steadily and difficult to make a consistent sharp edge. When you use a sharp fish knife, the process of preparing a fish becomes easier and more satisfying. However, it is very difficult and dangerous to attempt to fillet fish using a blunt knife. Try imagining cutting through the bone, flesh and skin of a fish using a blunt knife! This will definitely force you to push the knife instead of slicing the fish with the knife. This will definitely make your job more difficult and can easily lead to accidents. It is advisable that you start with a decent fish knife then regularly use an easy to use sharpener that is kept near the fish preparation location. Your goal is to keep the knife with a razor sharp edge. The following three sharpeners are highly rated, effective, and inexpensive:

The USA made AccuSharp Knife Sharpener is the number one rated and best-reviewed sharpener on the market. This is the perfect knife sharpener for fishermen for sharpening their fillet knives, kitchen knives and other cutting tools. **Amazon \$9.96**

<https://www.youtube.com/watch?v=P704B1EtMC0>



In order to make the KitchenIQ 50009 Edge Grip 2 Stage Knife Sharpener more practical, the manufacturer developed the V grip bottom. This feature allows you to place the sharpener and use it on different surfaces. As the end result, this model can be used on slippery surfaces or any other surface you have in mind. At the same time, this feature makes it safer, so the risk of an injury is reduced. The bottom in question is durable and it will last long, despite the fact you will use this sharpener every day. The handle is based on the same principle, which means that it offers a lot of grip, so hand slipping isn't an issue. All of this makes sharpening quicker and safer.

Amazon \$5.99 www.youtube.com/watch?v=E5c4IKhtlic

Don't be fooled by the simplistic look or the low price. This tool does an excellent job of sharpening virtually any knife. Simply set the heel of the blade into the V-shaped sharpening slot and draw the knife back. Light pressure and three or four strokes is all it takes to put a cutting edge back on a fillet knife. The Sunrise Pro Supreme has a pivoting safety handle and suction cup base that holds steady during sharpening. It can be used to sharpen many different types and sizes of knives, including serrated bread knives. **Amazon \$13.97**



		LENGTH	WEIGHT	WATER	DATE	ANGLER
2018	Kokanee	18"	1.75	WHISKYTOWN	9-8	B. MIERKY
2019	Landlocked Salmon	22 3/8"		OROVILLE	6-10	R. CORRAO
	River or Ocean King Salmon	38"	28lb	SACTO RIVER	10-18	M. MCKENDREE
	Striped Bass	34"		S.F. BAY	6-20	D. SOUDERS
	Rainbow Trout	15"		FOLSOM LAKE	1-31	MCKENDREE
	Brown Trout	27	7lb 9oz	DONNER LAKE	8-22	R. NORTHAM
	Steelhead	27"		AMERICAN RIVER	1-30	S. CONLAN
	Lake Trout (Mackinaw)	22"		DONNER LAKE	8-22	R. NORTHAM
	Large Mouth Bass	23"	4lb 8oz	PRIVATE FARM	8-28	Rik COX
	Coffish					
	Shad			CAMP FAY WEST	5-21	SHAWN CONLAN
	Crappie	14"				

2019 names in Red — 2018 names in Black

RAINBOW TROUT—Mac McKendree, 15', Folsom Lake, 1/31/19
STEELHEAD, Shawn Conlan, 27", American River, 1/30/19

Folsom Lake Where do you start?—con't from page 1

Folsom is Jerry's home-lake where he has been rewarding his clients with quality limits of trout and salmon since 2008. Hailing from Fresno, Jerry has been a fishing guide since 2005 and operates his successful TNG Guide Service from his Meadow Vista home.

His clients enjoy the comfort of his custom Rogue Jet guide boat that is equipped with state-of-art electronics and out-fitted with quality rods, reels, and all necessary tackle. Breakfast meeting attendees will have the opportunity to check-out Jerry's boat that will be on display in the Elks Lodge parking lot.

Jerry Lampkin's 23' Rogue Jet Custom Guide Boat



<https://www.youtube.com/watch?v=7y0JJEOLVFE>